

1949-50 Tail Light Lens, Bezels, Gaskets



Total Production
1949 and 1950
Approximately 2,555,698
Average Weight 3188 lbs.

1949-50 TAIL LIGHT PACKAGE



PACKAGE INCLUDES:

- Tail Light Bezels
 - Glass Lens
 - Tail Light Gaskets
 - Tail Light Mounting Pad
- ORDER #4413-1

SAVE \$\$

Only **\$87⁰⁰**

1949-50 TAIL LIGHT PACKAGE WITH BLUE DOT LENS



PACKAGE INCLUDES:

- Tail Light Bezels
 - Blue Dot Lens
 - Tail Light Gaskets
 - Tail Light Mounting Pad
- ORDER #4413-2

SAVE \$\$

Only **\$99⁰⁰**

GLASS BLUE DOT TAIL LIGHT LENS

For that "custom purple glow" look.



ORDER #4406
\$30⁰⁰ pr.



1949-50 TAIL LIGHT REFLECTOR

ORDER #4407

\$12 pr.



1950 GLASS TAIL LIGHT LENS

Not original but looks good. Glass lens will resist fading. While not correct, will also fit 1949.

ORDER #4405 **\$8⁰⁰**



1949-50 TAIL LIGHT GASKET

ORDER #4401

\$3⁰⁰ ea.

1949-50 TAIL LIGHT BEZEL

A beautiful reproduction that also includes reflector.

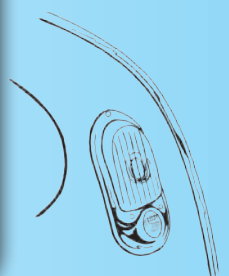


ORDER #4413
\$62⁰⁰ pr.

1949-50 TAIL LIGHT MOUNTING PAD

ORDER #4402

\$12⁰⁰ pr.



1954 Tail Lights



1954 BLUE DOT LENS

For that custom "purple glow" look.

ORDER #457

\$26⁰⁰ pr.

1954 STAINLESS TAIL LIGHT DIVIDER



ORDER #469

\$10⁰⁰ ea.



LEE CUSTOM FLAT LENS

One-piece custom lens that lights up in diamond pattern when brakes are applied. Looks great. Only gasket you need is body to bezel gasket. Includes installation instructions.

ORDER #460

\$68⁰⁰ pr.

LEE CUSTOM BUBBLE LENS

Just like the other Lee Custom Lens except that it bubbles out instead of being slightly curved. Includes installation instructions.



ORDER #463

\$75⁰⁰ pr.



REPLACEMENT LAMP PLUG

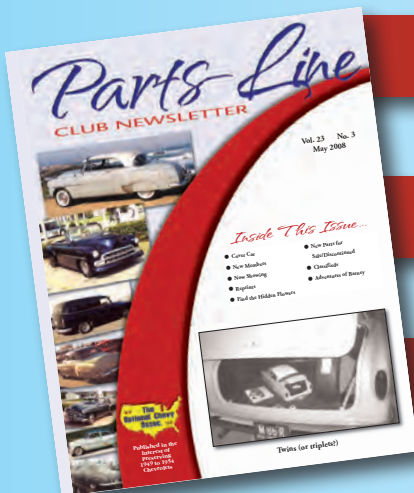
Fits 1954 upper lens and has 6" attaching wire.

ORDER #464

\$15⁰⁰ ea.

Join The Club!

It's easy and best of all FREE. Just place an order for \$85.00 or more and you're all set to enjoy the newsletter until September of each calendar year.



Enjoy Cool Cars

Articles

Monthly Specials for Members Only

Monthly Contests

Free Classified Ads

New Product Updates

We're proud to do the newsletter for you.

You can also be a part of the newsletter – send pictures/stories of your car. The newsletter is made up of what you, the members, send in. Don't need parts but want to be a member? The newsletter is pro-rated by quarters so you only pay for what you receive.

See the front of the catalog for more information.

National Chevy — still dedicated to the preservation of 1949-54 Chevys after 23 years.